

赤龍 原宅 翠鳳

Chih-long, Liao House, Cuei-feng

目前大溪街區保存尚稱完整的三坎店仔就是這兒，店內大廳門額題有堂號「永安居」，興建至今已經歷6代，據說在未分家時共住有40餘人。

廖氏家族的輩份排名為「上國朝廷詩書天，正心大學本宜先，榮光獻瑞」。最初由「上」字輩的先人渡海來台至大溪，「天」字輩的祖先在田心仔庄（現址在文化路，位於正龍橋附近的稻田中央）興建祖厝（今廖家祠堂）。「心」字輩的廖心興，時逢

日本時代的市區改正計畫，在此興建店屋「永安居」，開設「興記」布行，後來改從事殺豬工作。大兒子廖大從，從事麻油生意，分家後住在永安居左側（赤龍），小兒子則繼承父業，住在永安居右側（翠鳳），目前當家者為「本」字輩的子孫。

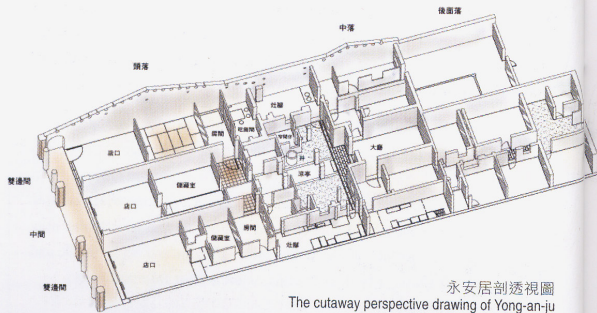
永安居為「三坎三落兩過水」，以店的進深而言，區分為頭落、中落及後面落；以店的面寬而言，左右兩邊的店屋（86及90號）稱為「雙邊間」，居中者（88號）則稱為「中間」。

這三坎店有許多類似合院的地方，如「中落」像是口字型的三合院，兩側「雙邊間」的「過水」就像左右護龍，所以從店口進入深井看到大廳時，會有身處在傳統合院的錯覺感。



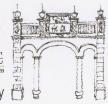
永安居深井內的大廳入口。
Main Hall in the shenjing of Yong-an-ju

34



永安居剖透視圖
The cutaway perspective drawing of Yong-an-ju

大溪鎮中央路 86、88、90 號 / 私人住家「永安居」 / 廖宅
86, 88, 90 Zhongyang Road, Dasi Township / "Yong-an-ju"
/ private domicile of the Liao Family



Presently it is the three-kan store that is well preserved in nearly intact condition in Dasi. A tablet inscribed with "Yong-an-ju" is hung above the door of the main hall. It's now the sixth generation living here since its completion. It is said there were more than 40 persons living in this three-kan store/house before family property was divided.

The generations of the Liao Family are ranked in accordance with a motto reading "shang-guo-chao-ting-shih-shu-tian, jheng-sin-da-syue-ben-yi-sian, rong-guang-sian-ruei". In the beginning, the generation of "shang" sailed across the Taiwan Strait, arrived in Taiwan, and settled down in Dasi. The generation of "tian" built the house of the family (now the ancestral shrine of the Liao Family) in Tiansinzih (presently located on Wunhua Road, in the midst of the rice field near Jhenglong Bridge.) Sin-sing Liao belonging to the generation of "sin" built the store/house - "Yong-an-ju" in Dasi and established "Sing-ji" to enter the trade of cloth at a time when the city restructuring plan was carried out during the Colonial Rule. Sin-sing Liao later changed his profession and became a butcher. His firstborn son, Da-cong Liao is engaged in the business of sesame oil and lives on the left side of "Yong-an-ju" (namely Chih-long) after family property was divided. The youngest son inherits his father's profession and lives on the right side of "Yong-an-ju" (namely Cuei-feng). Presently, the offspring of the generation of "ben" is in charge of the household.

The scope of "Yong-an-ju" is "three kan, three luo, two guoshuei". As far as the depth of the store is concerned, it is divided into the front luo, the middle luo, and the rear luo. With regard to the width of the store, the store/house on both sides are called "a pair of side store" and the one in the center called "central store".

This three-kan store/house has much similarity with a courtyard house; for example, the middle luo is like a courtyard house in the shape of 口. Furthermore, guoshuei on both sides of the pair of side store are similar to a pair of hulung. Consequently, you will have a delusion of standing inside a traditional courtyard house when you walk into the patio from the store and see the main hall.



「永安居」赤龍、翠鳳牌樓面的街景。
Street scenes with the façades of the arcades of Chih-long and Cuei-feng

35